

Customer :

customer

Customer part :

customer part

Comment :

Comment

S1=2.88

S2=2.52

Tmax=460

Tp S2=499.0

PI=0.53

HI=72

Sample =1730.30

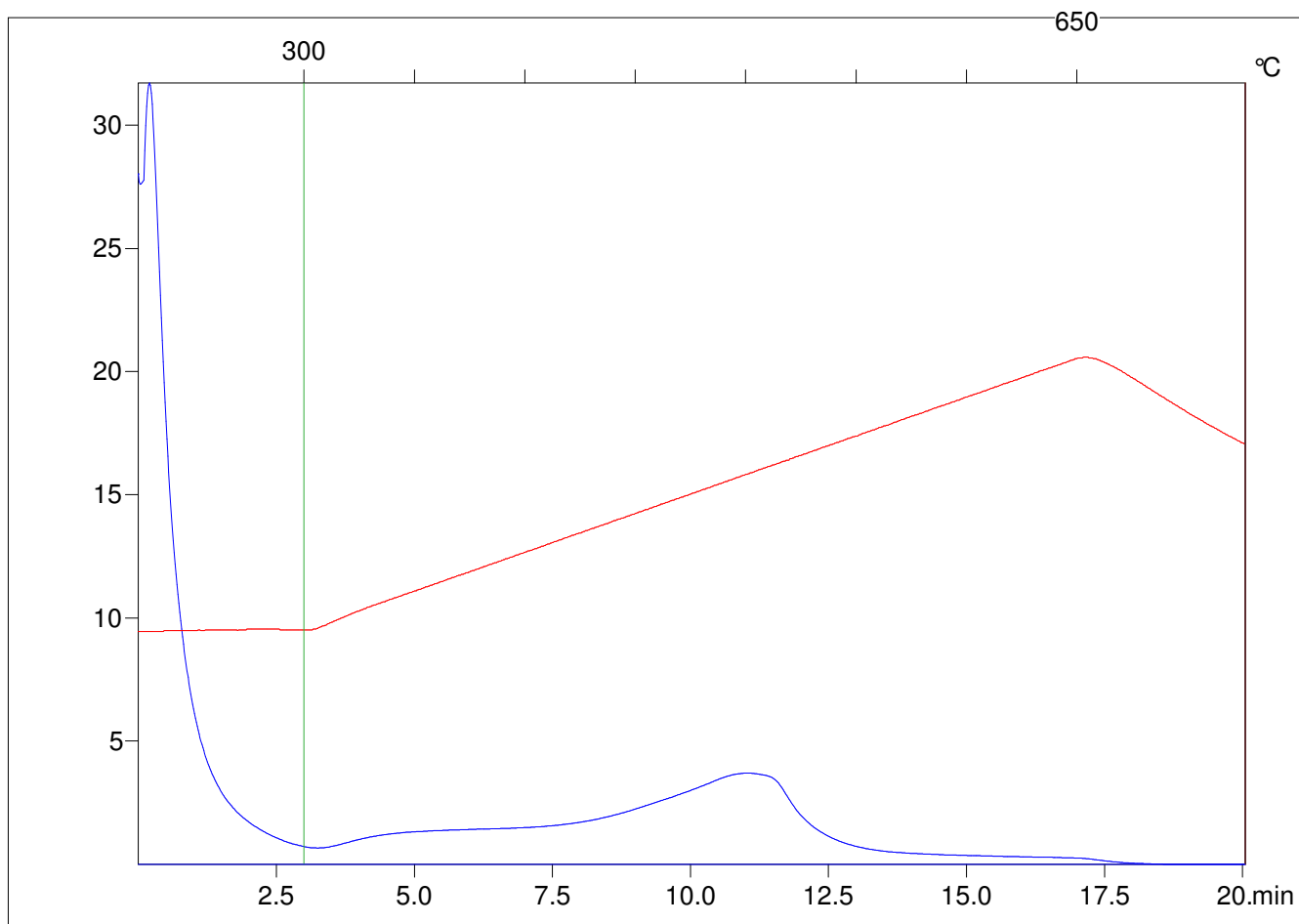
Method =Bulk Rock

Cycle=Basic

KFID(10*9)=1444

Qty =70.3

TOC=3.5



C:\VINC\PK2_1792\PK051.R00 : FID pyrolysis graphic

State

Pyro Status

Oxi Status